



Image shown may not reflect actual configuration

C18 ACERT™ U.S. EPA Tier 4 Final Sub-base Fuel Tank Newberry Diesel Generator Set 455 – 500 kW 60 Hz

Description

The sub-base fuel tank mounts below the generator set skid base

Features

- UL listed for United States (UL 142) and Canada (ULC S601)
- Compliant with NFPA 30, 37, and 110 and CSA C28 and B139 standards
- Dual wall
- Lockable fuel fill cap, 4" (101.6 mm) NPT
- Fuel fill drop tube with in 6" (152 mm) from bottom of tank
- Low fuel level warning standard, customer configurable warning or shutdown
- Primary tank leak detection switch in containment basin
- Tank design provides capacity for thermal expansion of fuel
- Fuel supply drop tube is positioned so as not to pick up fuel sediment
- Fuel return and supply dip tube is separated by an internal baffle to prevent immediate re-supply of heated return fuel
- Pressure washed with an iron phosphate solution

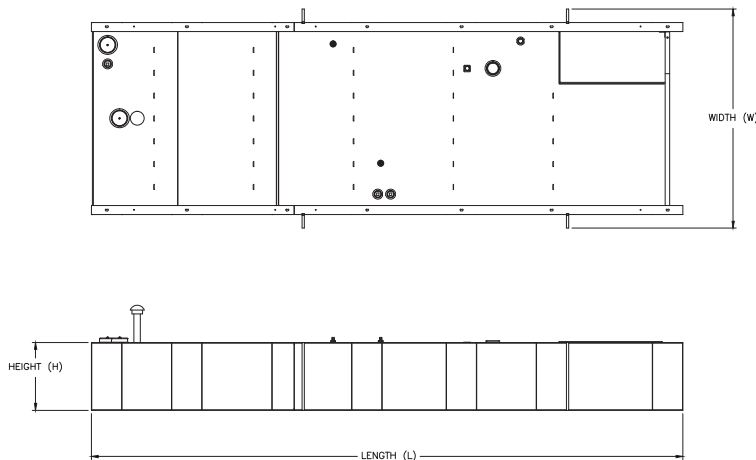
- Interior tank surfaces coated with a solvent-based thin-film rust preventative
- Primary and secondary tanks are leak tested at 20.7 kPa (3 psi) minimum
- Compatible with open packages and enclosures
- Gloss black polyester alkyd enamel exterior paint
- Welded steel containment basin (minimum of 125% of primary tank capacity)
- Direct reading fuel gauge at fill location and internal fuel gauge with variable electrical output
- Emergency vents on primary and secondary tanks are sized in accordance with NFPA 30

Options

- Audio/visual fuel level alarm panel
- 5 gallon (18.9 L) spill containment with pipe extending to within 6" from bottom of tank
- 5 gallon (18.9 L) spill containment with overflow prevention valve

Fuel Tank Capacities with Dimensions and Weights

Feature Code	Total Capacity		Useable Capacity		Tank Only								Tank and Package			
					Dry Weight		Height 'H'		Length 'L'		Width		Open Package Height		Enclosure Package Height	
	L	gal	L	gal	kg	lb	mm	in	mm	in	mm	in	mm	in	mm	in
FTDW011	2650	700	2498	660	1315	2900	381	15.0	5836	229.8	2217	87.3	2566	101.0	2829	111.4



The heights listed above do not include lumber used during manufacturing and shipping.

Estimated Run Times (hours) at 100% Load

Feature Code	Rating eKW	
	500 (Standby)	455 (Prime)
FTDW011	17.5	19.5

Tanks with full electrical stub-up area include removable end channel. Tanks with RH/LH stub-up include stub-up area directly below the circuit breaker or power terminal strips.

Dual wall sub-base tanks are UL listed and constructed in accordance with Underwriters Laboratories Standard UL 142 "Steel Aboveground Tanks for Flammable and Combustible Liquids" and Canada ULC S601 "Shop Fabricated Steel Aboveground Tanks for Flammable and Combustible Liquids."

Fuel tanks comply with the following United States NFPA codes:

- NFPA 30 – Flammable and Combustible Liquids Code
- NFPA 37 – Standard for Installation and Use of Stationary Combustible Engine
- NFPA 110 – Standard for Emergency and Standby Power Systems

Fuel tanks comply with the following Canadian Codes:

- CSA C282 – Emergency Electrical Power Supply for Buildings
- CSA B139 – Installation Code for Oil-burning Equipment

www.Cat-ElectricPower.com

©2015 Caterpillar
All rights reserved.

Materials and specifications are subject to change without notice. CAT, CATERPILLAR, their respective logos, ACERT, "Caterpillar Yellow", the "Power Edge" trade dress as well as corporate and product identity used herein, are trademarks of Caterpillar and may not be used without permission.