

B758 TRACK FELLER BUNCHER



POWERFUL PERFORMANCE.

Powerful combination of lift capacity, swing torque, and tractive effort provides for maximum machine performance, increasing overall machine efficiency and operator experience in adverse terrain and large timber.



UNOBSTRUCTED GROUND CLEARANCE.

High, unobstructed carbody enables un-impeded travel over rocks, stumps, and other debris with 35" (889 mm) of ground clearance. Leveling cylinders do not extend below the bottom surface of the carbody.



PURPOSE BUILT LOWER FRAME.

Extended, eleven roller track frames provide maximum stability and lift capacity, while minimizing ground pressure. Variable gauge roller frames provide flexibility in machine width, for over-the-side stability or transport.



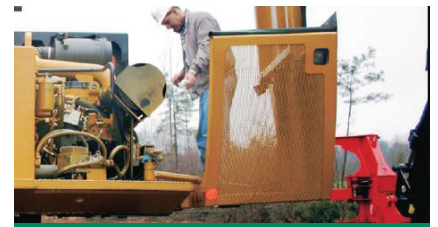
STEEP SLOPE OPTIONS.

Purpose-built steep slope harvesting options include specialized engine and hydraulic kits and a cable-assist mount, which improve operator comfort, productivity and efficiency, and ensure reliable machine performance.



PROVEN RELIABILITY AND DURABILITY.

Extensive validation of common key components that includes the engine, hydraulic pumps, swing drive, and grease-lubricated Cat® 349 HD HEX undercarriage ensure machine uptime and reduce overall operating costs.



EXCELLENT SERVICEABILITY.

Gull-wing engine enclosures provide unmatched serviceability of components and enables "walk-through" engine access from the cab side of the machine. Enclosures provide a flat area to complete preventative maintenance and service.

B758 SPECIFICATIONS

Engine Model	Cat® C9 Tier 3	Tractive Effort	104,000 lb 47 174 kg	Fuel Tank Capacity	312 gal 1181 L
Gross Power	303 hp 226 kW	Undercarriage Size	349 HD HEX	Engine Oil Capacity	10.3 gal 39 L
Engine Displacement	537 in ³ 8.8 L	Undercarriage Pitch	8.5" 216 mm	Hydraulic System Capacity	97.7 gal 370 L
Weight (no head)	81,738 lb 37 076 kg	Ground Clearance	35" 889 mm	Transport Width	11' 10" 3.61 m
Maximum Flow	250 gpm 946 L/min	Track Gauge	113" 2870 mm	Height	13' 0" 3.96 m
Max. Reach (w/ 201 saw)	28' 1" 8.56 m	Track Length	221" 5615 mm	Length (boom ext., w/201 saw)	39' 8" 12.10 m
Lift at Max. Reach (no head)	19,111 lb 8669 kg	Leveling System Capability	21° Forward 11° Side-to-Side	Length (boom tuck., no head)	32' 2" 9.81 m

Base configuration includes standard feller buncher boom and stick, roller frames in the wide position, and 28" (710 mm) single grouser shoes.

POWERTRAIN

- Cat C9 engine certified to EPA Tier 3
- Primary, secondary, and tertiary fuel filters, including water separator
- Electric fuel priming pump
- Side-by-side radiator and oil cooler
- Swing out air-to-air cooler and air conditioner condenser
- Removable debris screen
- Centrifugal engine air pre-cleaner
- Under-hood 2-stage engine air cleaner
- Variable pitch, reversing fan with guard
- Heavy-duty starter and ether aid

UNDERCARRIAGE

- Three-cylinder leveling system
- Heavy-duty variable gauge track roller frames
- Grease-lubricated 349 HD HEX track
- Straddle mounted carrier rollers
- Heavy-duty bottom track rollers (11 per side)
- Heavy-duty recoil mechanisms
- Full length track shoe support
- Heavy-duty travel motor and swivel guards
- Towing eyes on base frame

HYDRAULICS

- 2 main hydraulic pump groups for track and implement functions
- Saw pump for feller buncher and intermittent saw hydraulics only
- High-performance hydraulic return filters
- 325 size, high torque swing drive
- Swing cushion valve and automatic swing parking brake
- Two speed auto-shift travel
- Electric hydraulic oil fill pump
- Spare hose storage area

ELECTRICAL

- 95 ampere alternator
- 24-volt electrical system with 2 12-volt batteries
- 10 LED working lights and 3 LED service lights
- Horn and travel alarm
- Secondary engine shut off switch
- Product Link™ ready

SALES AND SERVICE

Sold and serviced exclusively through Weiler Forestry dealers worldwide

WEILERFORESTRY.COM

OPERATOR ENVIRONMENT

- Enclosed FOPS/ROPS/OPS/OR-OSHA/WCB certified cab
- Seat with air suspension, integrated joysticks, and head rest
- Retractable 4-point seat belt
- Display monitor and programmable operator controls
- Scratch resistant polycarbonate windows
- Reverse slope 1.25" (32 mm) front windshield
- Skylight with sun shade
- Windshield wiper and washer
- Left-side fresh air window
- Pressurized cab with filtered ventilation and forced air fan
- Heater / air conditioner / defroster with manual controls
- Radio ready with speakers
- Two sockets for 12-volt power supply

OTHER STANDARD EQUIPMENT

- Twin heavy-duty hood enclosure
- Heavy-duty hood enclosure with machine level engine enclosure access
- Heavy-duty doors, covers, and bottom guards

OPTIONAL EQUIPMENT

- Low or high flow standard feller buncher boom and sticks
- Intermittent saw boom and stick
- Short or long harvester boom and sticks
- Boom and stick omission options
- Standard or star carrier rollers
- 24" (600 mm) or 28" (710 mm) SG, 349 HD HEX Track
- Cold or arctic weather starting aid
- Engine and hydraulic steep slope kit and cable-assist mount
- 201 continuous saw w/ partial or full tilt - 22.5" (572 mm)

WARRANTY

12 months standard, extended warranty available

Materials and specifications are subject to change without notice.
Featured machines and photos may include optional equipment. All rights reserved.

B758 LRC, SS (11-2019)